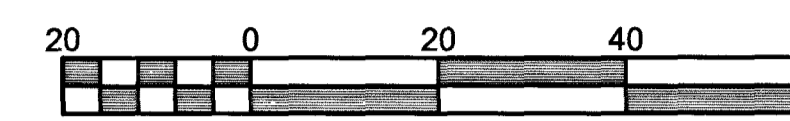


GRIFFINTOWN

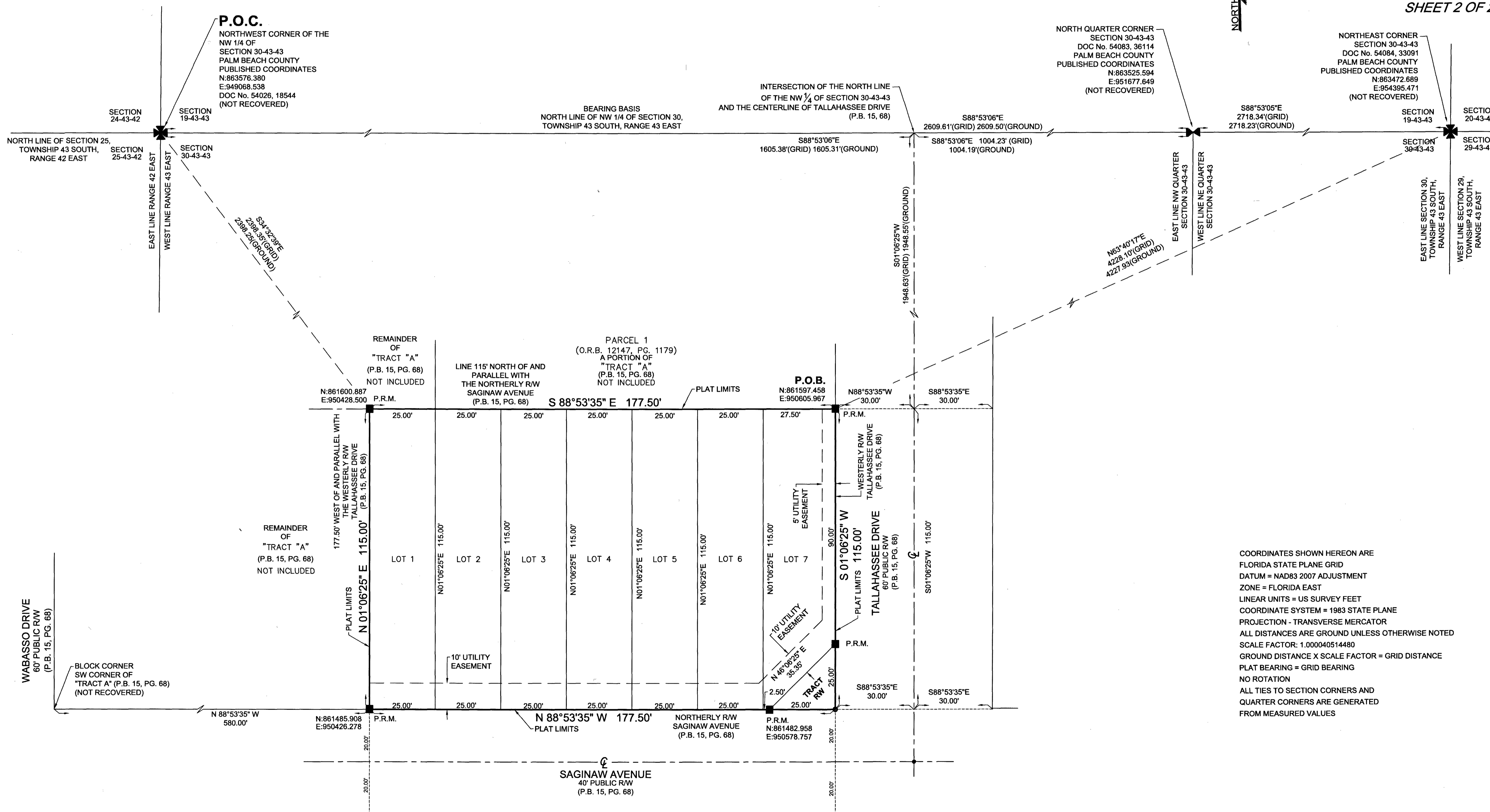
BEING A REPLAT OF A PORTION OF TRACT A, OF HENNESSEY'S REPLAT, OF BLOCK 44, AND PART OF BLOCKS 45 AND 50, WEST GATE ESTATES, ACCORDING TO THE PLAT THEREOF, AS RECORDED IN PLAT BOOK 15, PAGE 68, PUBLIC RECORDS OF PALM BEACH COUNTY, FLORIDA, LYING IN SECTION 30, TOWNSHIP 43 SOUTH, RANGE 43 EAST, PALM BEACH COUNTY, FLORIDA.

136

SHEET 2 OF 2



SHEET 2 OF 2



COORDINATES SHOWN HEREON ARE FLORIDA STATE PLANE GRID
 DATUM = NAD83 2007 ADJUSTMENT
 ZONE = FLORIDA EAST
 LINEAR UNITS = US SURVEY FEET
 COORDINATE SYSTEM = 1983 STATE PLANE
 PROJECTION - TRANSVERSE MERCATOR
 ALL DISTANCES ARE GROUND UNLESS OTHERWISE NOTED
 SCALE FACTOR: 1.000040514480
 GROUND DISTANCE X SCALE FACTOR = GRID DISTANCE
 PLAT BEARING = GRID BEARING
 NO ROTATION
 ALL TIES TO SECTION CORNERS AND QUARTER CORNERS ARE GENERATED FROM MEASURED VALUES

LEGEND:

⊙ = SET P.C.P., "P.K." NAIL & DISC STAMPED "MLS" LB # 6838"	C.M. = CONCRETE MONUMENT (D) = DEED	L.W.D.D. = LAKE WORTH DRAINAGE DISTRICT (M) = MEASURED	P.O.C. = POINT OF COMMENCEMENT
■ = SET PERMANENT REFERENCE MONUMENT (P.R.M.) 4" X 4" CONCRETE MONUMENT STAMPED "M.L.S., L.B.#6838"	D.B. = DEED BOOK	O.R.B. = OFFICIAL RECORD BOOK	P.R.M. = PERMANENT REFERENCE MONUMENT
△ = CENTERLINE	D.E. = DRAINAGE EASEMENT	P.B. = PLAT BOOK	R = RADIUS
	EASE = EASEMENT	P.B.C. = PALM BEACH COUNTY	R.W. = RIGHT OF WAY
	FD. = FOUND	PG. = PAGE	U.E. = UTILITY EASEMENT
	L = ARC LENGTH	P.C.N. = PROPERTY CONTROL NUMBER	
	L.A.E. = LIMITED ACCESS EASEMENT	P.O.B. = POINT OF BEGINNING	

PREPARING SURVEYOR & MAPPER'S STATEMENT
 THIS INSTRUMENT WAS PREPARED BY MICHAEL J. MILLER, P.S.M. 4034
 IN THE OFFICE OF MILLER LAND SURVEYING, 1121 LAKE AVE., LAKE WORTH, FL 33460

SCALE: 1" = 20'	MILLER LAND SURVEYING 1121 LAKE AVENUE LAKE WORTH, FLORIDA 33460 PHONE: (561) 586-2669 - FAX: (561) 582-0151 www.millersurveying.com e-mail: orders@millersurveying.com	REF: T44/20
DRAWN BY: S.R.L.		PREV. JOB NO'S:
FIELD WK: J.W. / B.M.		JOB NO. Y220101
DATE: 03/10/2022		L-2314-A